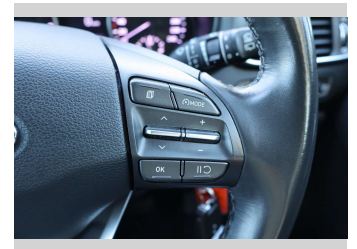
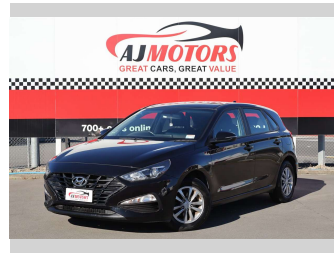



# 2022 Hyundai i30 PDE 1.5 Hatch 1.5P



**Purchase Price** **POA**  
Includes GST, Registration & Licensing

Finance may be available on this vehicle. Ask one of our friendly staff for more information.



Gain peace of mind with Mechanical Breakdown Insurance. **Ask us how.**



- Top features**
- » ABS
  - » Air Conditioning
  - » Apple CarPlay
  - » Auto headlight
  - » Cruise control
  - » Drive Mode
  - » Fog Lights
  - » Parking Sensors
  - » Rear Wiper
  - » Reversing Camera

**Body Style**  
**4 door, Hatchback**

**Odometer**  
**95,200 km**

**Engine**  
**1498 cc, Internal Combustion**

**Fuel Type**  
**Petrol**

**Transmission**  
**Automatic, 2WD**

**Wheels**  
**15"**

**VIN**  
**TMAH351CMNJ166266**

**Interior**  
**Black**

**Safety**



Based on 2025 UCSR rating for 17-23 models

**Reg No.**  
**NYG635**

**Ext Colour**  
**Black**

**History**  
**Ex-Overseas**

**Seats**  
**5 seats**

**CO2 Emissions**  
**★★★★☆**  
**167 grams/km**

**Energy Economy**  
**★★★☆☆**

**Annual fuel cost of \$2,780**  
**7.1L per 100km**

Cost per year is an estimate based on petrol price of \$2.80 per litre and an average distance of 14000 km. Emissions and Energy Economy figures standardised to 3P WLTP.

**Stock ID: 34086**



AJ Motors Christchurch | Phone 0800 566 789 | Email christchurch@ajmotors.co.nz  
207 Main South Road, Hornby, Christchurch 8042, New Zealand  
www.ajmotors.co.nz