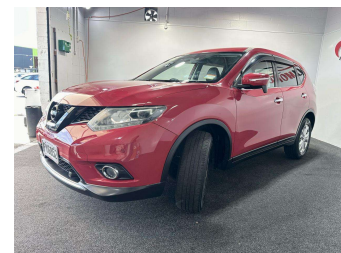


# 2015 Nissan X-Trail 2.0 4WD



## Purchase Price

Includes GST, Registration & Licensing

**POA**

Finance may be available on this vehicle. Ask one of our friendly staff for more information.

finance  
**NOW**

Gain peace of mind with Mechanical Breakdown Insurance. **Ask us how.**

**autosure**  
INSURANCE

## Top features

- » 4WD
- » Air Conditioning
- » Alloy Wheels
- » Auto Start Stop
- » Central Locking
- » Child seat anchor poin...
- » Eco Mode
- » Electric Mirrors
- » Keyless entry
- » Leather Seats
- » Multi-function steerin...
- » Push button start
- » Reversing Camera

## Body Style

**5 door, RV/SUV**

## Odometer

-

## Engine

**1997 cc, Internal Combustion**

## Fuel Type

**Petrol**

## Transmission

**Automatic**

## Wheels

-

## VIN

**7AT0DH6LX23528550**

## Interior

**Black**

## Safety



Based on 2025 UCSR rating for 14-22 models

## Reg No.

**PYG852**

## Ext Colour

**Red**

## History

**Ex-Overseas**

## Seats

**5 seats, Leather**

## CO2 Emissions

★★★★★☆☆

**165 grams/km**

## Energy Economy

★★★☆☆☆☆

**Annual fuel cost of \$2,780  
7.1L per 100km**

Cost per year is an estimate based on petrol price of \$2.80 per litre and an average distance of 14000 km. Emissions and Energy Economy figures standardised to 3P WLTP.

**Stock ID: 32210**



AJ Motors East Tamaki | Phone 0800 566 789 | Email  
easttamaki@ajmotors.co.nz  
53 Springs Road, East Tamaki, Auckland 2013, New Zealand  
www.ajmotors.co.nz