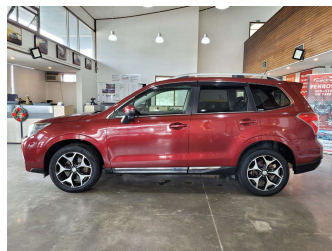


# 2013 Subaru Forester 4WD 2.0XT EYESIGHT



## Purchase Price

**\$17,980**

Includes GST  
Excludes on-road costs of \$695

Finance may be available on this vehicle. Ask one of our friendly staff for more information.

**finance  
NOW**

Gain peace of mind with Mechanical Breakdown Insurance. **Ask us how.**

**autosure**  
INSURANCE

## Top features

- » ABS
- » Air Conditioning
- » All auto windows
- » Alloy Wheels
- » Auto Start Stop
- » Bluetooth
- » Central Locking
- » Child seat anchor poin...
- » Cruise control
- » Dual Climate Control
- » Eco Mode
- » Electric Mirrors (Retr...
- » Electronic Parking Bra...
- » Eyesight
- » Fog Lights
- » Headlights - LED with...
- » Heated Seats
- » Lane Departure Warning

Body Style

**5 door, RV/SUV**

Odometer

**98,000 km**

Engine

**2000 cc, Internal Combustion**

Fuel Type

**Petrol**

Transmission

**Automatic, 4WD**

Wheels

**18", Factory Alloys**

VIN

**7AT0GF17X25009821**

Interior

**Black, Plastic**

Safety



Based on 2025 UCSR rating for 12-18 models

Reg No.

-

Ext Colour

**WINE**

History

**Ex-Overseas**

Seats

**5 seats, Leather**

CO2 Emissions

★★★★☆

**195 grams/km**

Energy Economy

★★☆☆☆☆

**Annual fuel cost of \$3,290  
8.4L per 100km**

Cost per year is an estimate based on petrol price of \$2.80 per litre and an average distance of 14000 km. Emissions and Energy Economy figures standardised to 3P WLTP.

**Stock ID: 31297**



AJ Motors Wellington | Phone 0800 566 789 | Email kim@ajmotors.co.nz  
35 Annie Huggan Grove, Petone, Lower Hutt 5012, New Zealand  
www.ajmotors.co.nz