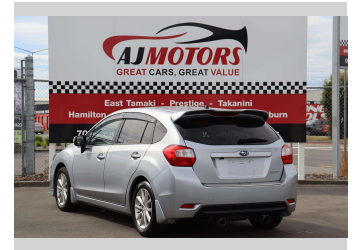
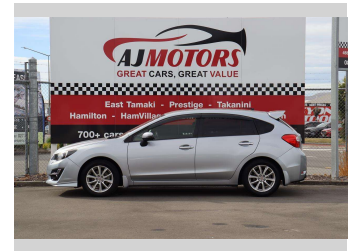


2016 Subaru Impreza 2.0i Cruise Control Rev Cam



Purchase Price **\$12,980**

Includes GST
Excludes on-road costs of \$695

Finance may be available on this vehicle. Ask one of our friendly staff for more information.



Gain peace of mind with Mechanical Breakdown Insurance. **Ask us how.**



Top features

- » ABS
- » Auto air-condition
- » Auto headlight
- » Central Locking
- » Cruise control
- » Dual Exhaust
- » electric seats
- » Push button start
- » Smart key system with...
- » Traction control

Body Style
4 door, Hatchback

Odometer
91,700 km

Engine
2000 cc, Internal Combustion

Fuel Type
Petrol

Transmission
Automatic, 2WD

Wheels
16", Factory Alloys

VIN
7AT0GF09X25015255

Interior
Black

Safety



Based on 2024 UCSR rating for 12-16 models

Reg No.
-

Ext Colour
Silver

History
Ex-Overseas

Seats
5 seats

CO2 Emissions
★★★★☆
153 grams/km

Energy Economy
★★★★☆☆

Annual fuel cost of \$2,590
6.6L per 100km

Cost per year is an estimate based on petrol price of \$2.80 per litre and an average distance of 14000 km. Emissions and Energy Economy figures standardised to 3P WLTP.

Stock ID: 26347



AJ Motors Christchurch City | Phone 0800 566 789 | Email sockburn@ajmotors.co.nz
393 Ferry Road, Woolston, Christchurch 8023, New Zealand
www.ajmotors.co.nz