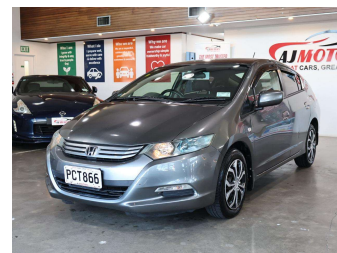



# 2009 Honda Insight Hybrid




**Purchase Price** **POA**  
Includes GST, Registration & Licensing

Finance may be available on this vehicle. Ask one of our friendly staff for more information.



Gain peace of mind with Mechanical Breakdown Insurance. **Ask us how.**



**Top features**  
None Listed

Body Style  
**5 door, Hatchback**

Odometer  
**134,000 km**

Engine  
**1330 cc, Internal Combustion**


Fuel Type  
**Petrol**

Transmission  
**Automatic, Front Wheel**

Wheels  
**15", Steel Wheels**

VIN  
**7AT08G9MX21192492**

Interior  
**Black, Plastic**

Safety  
  
Based on 2025 VSRR rating

Reg No.  
**PCT866**

Ext Colour  
**Grey**

History  
-

Seats  
**5 seats, Fabric**

CO2 Emissions  
**★★★★☆**  
**111 grams/km**

Energy Economy  
**★★★★☆**  
**Annual fuel cost of \$1,800**  
**4.6L per 100km**

Cost per year is an estimate based on petrol price of \$2.80 per litre and an average distance of 14000 km. Emissions and Energy Economy figures standardised to 3P WLTP.

**Stock ID: 35765**



AJ Motors Penrose | Phone 0800 566 789 | Email penrose@ajmotors.co.nz  
695 Great South Road, Penrose, Auckland 1061, New Zealand  
www.ajmotors.co.nz